

MC3090Z

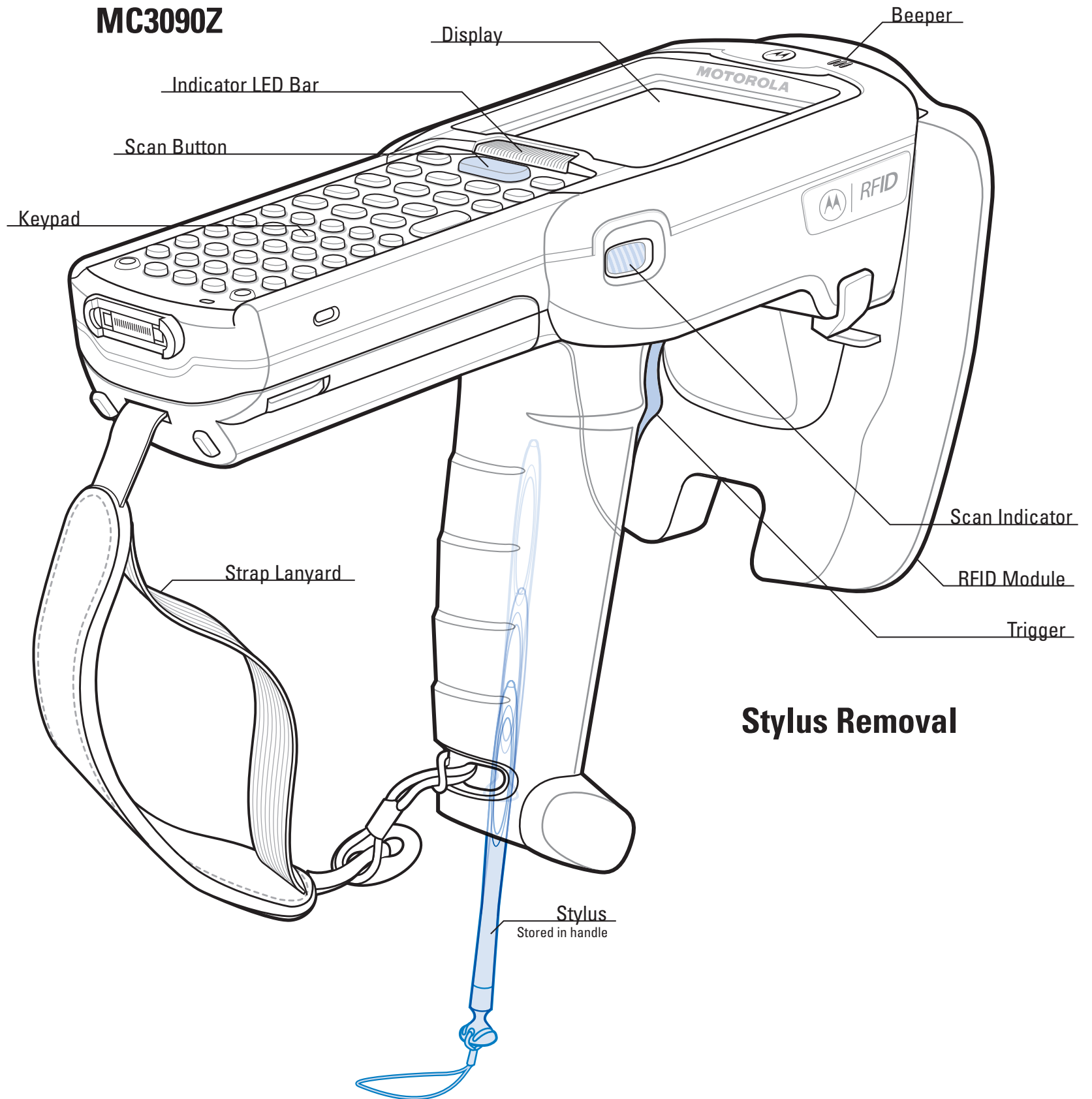
Quick Start Guide



<http://www.symbol.com/mc3000>
See User Guide for more information

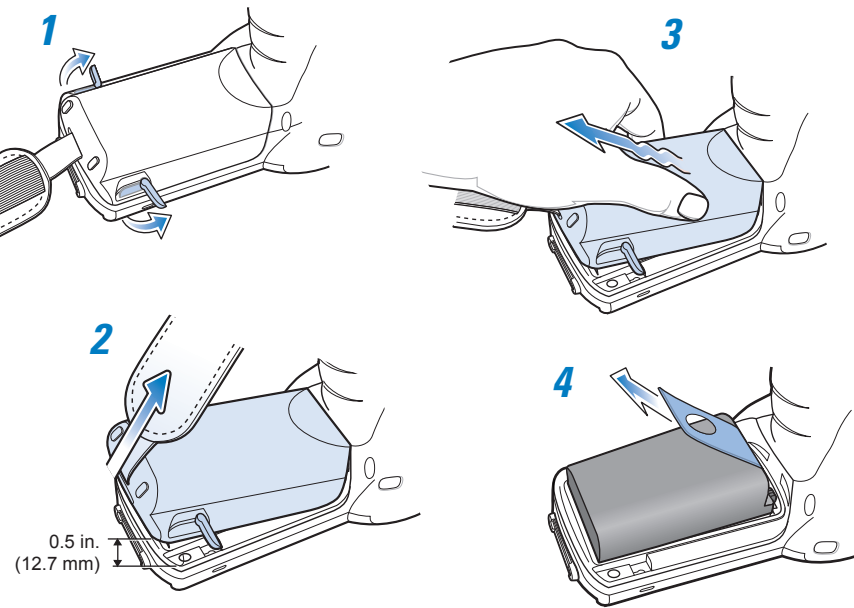
FEATURES

MC3090Z



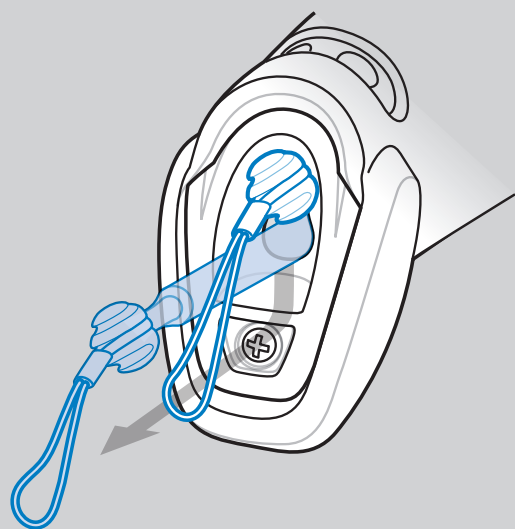
POST IN WORK AREA

Battery Removal

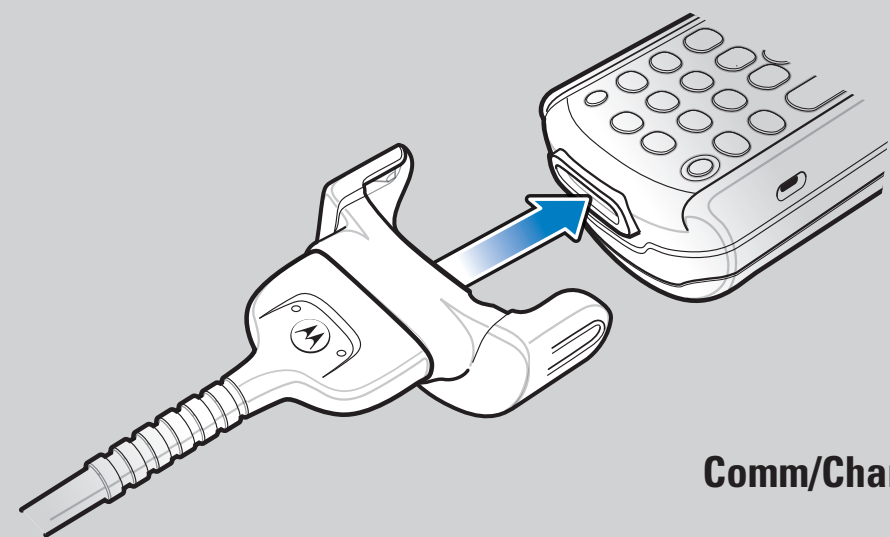


Stylus Removal

STYLUS REMOVAL



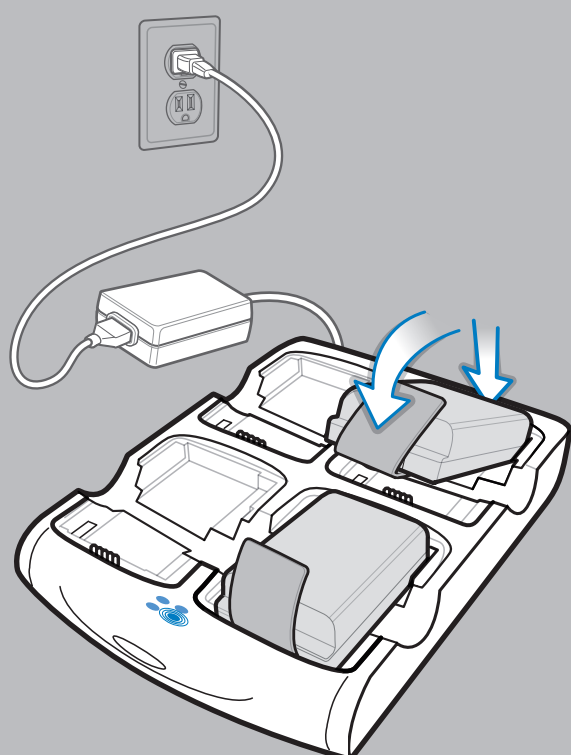
ACCESSORY INSTALLATION



Comm/Charge Cables

CHARGING INSTRUCTIONS

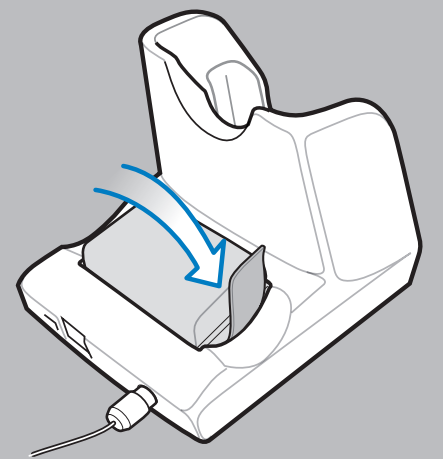
⦿ = LED Indicator Location | Slow Flash = Normal Charge | Solid Amber = Full Charge | Fast Flash = Charging Error



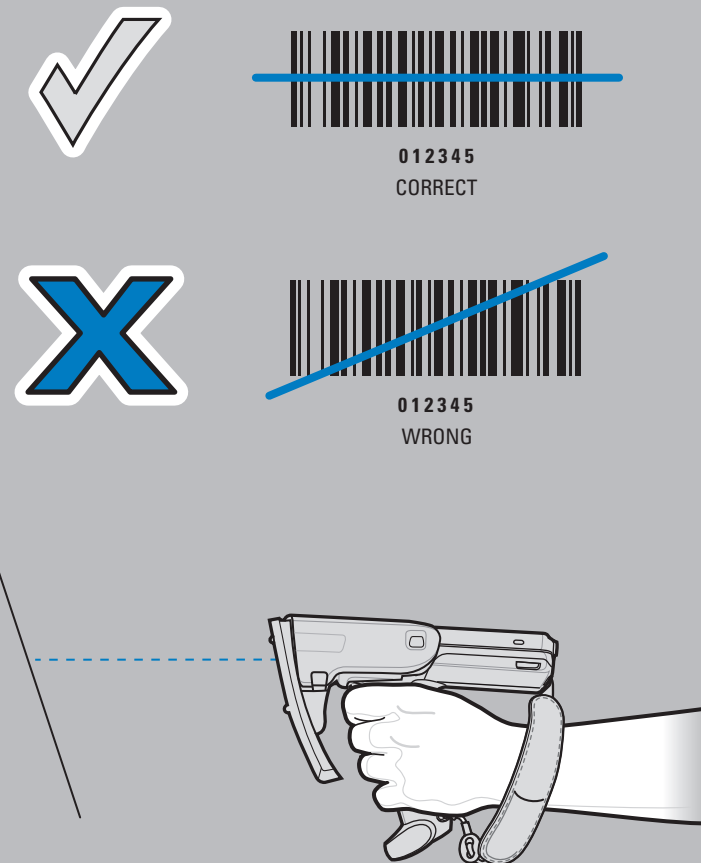
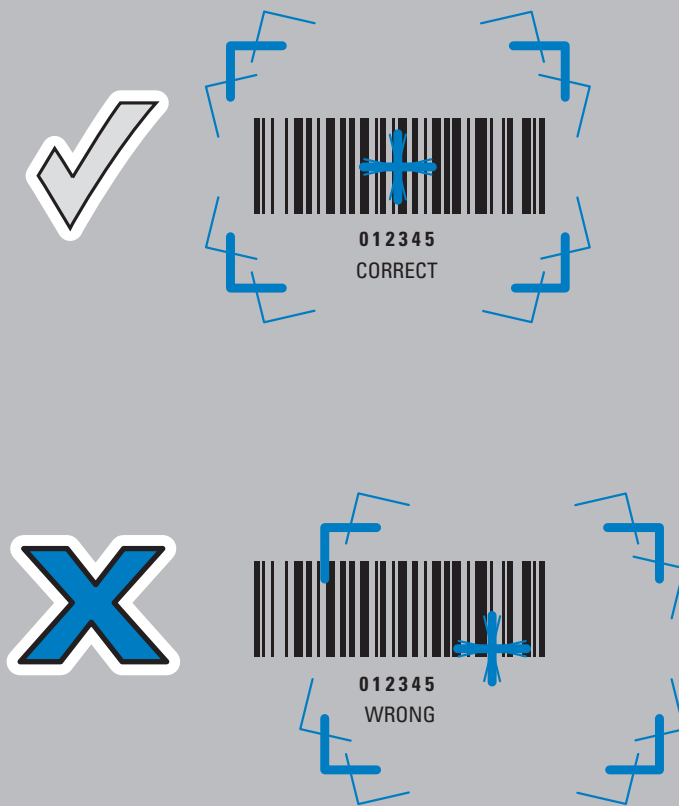
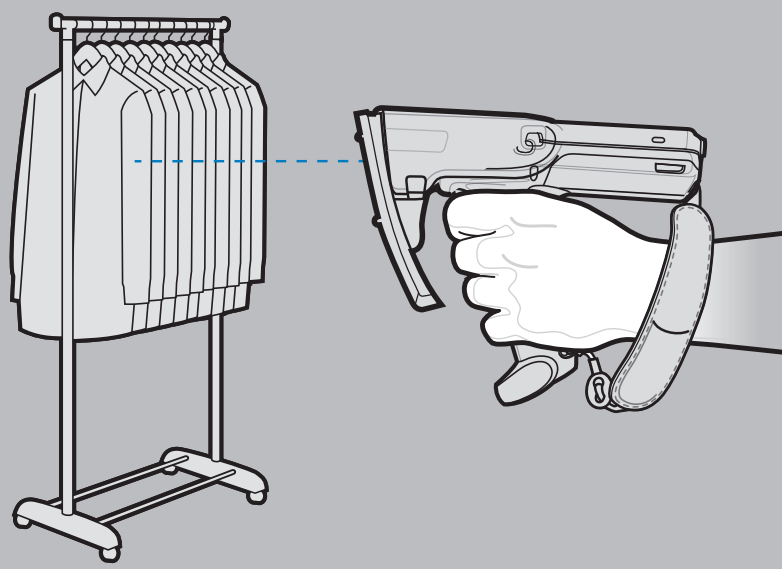
Four Slot Spare Battery Charger



Single Slot Serial Cradle



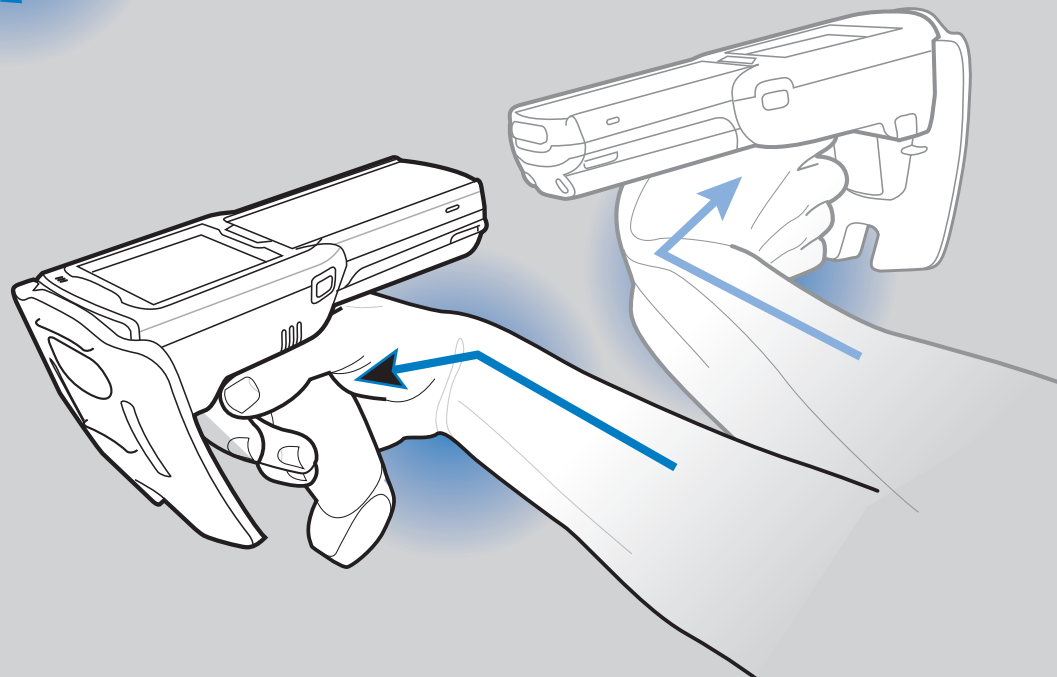
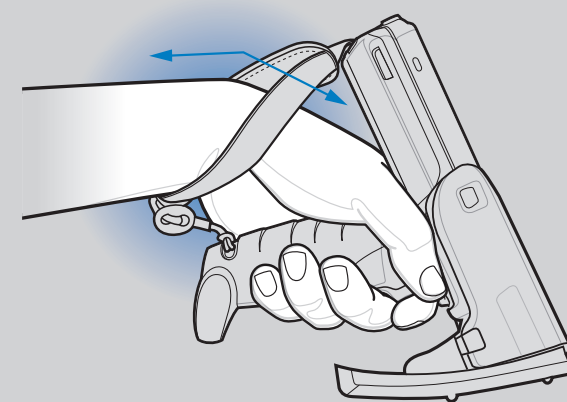
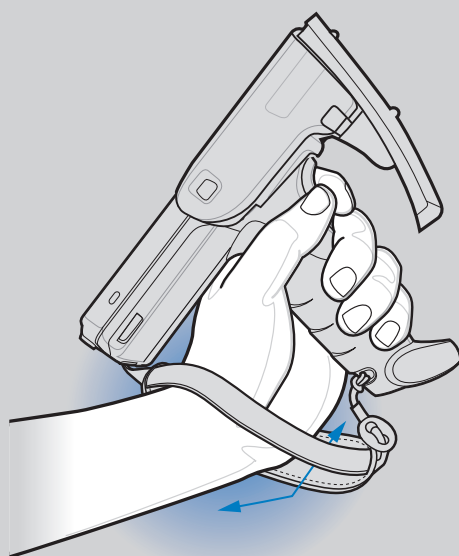
OPTIMUM RFID TAG DECODING



ALTERNATE LEFT AND RIGHT HANDS
TAKING BREAKS AND TASK ROTATION RECOMMENDED

OPTIMUM UPRIGHT BODY POSTURES

AVOID EXTREME WRIST ANGLES



OPTIMUM BODY POSTURE

Optimum Body Posture for Low Scanning

Alternate left and right knees



Alternate left and right hand

Optimum Body Posture for High Scanning



Use a ladder

Taking breaks and task rotation recommended

Local Contact: _____

POST IN WORK AREA

MOTOROLA
Motorola, Inc.
One Motorola Plaza Holtsville, New York 11742-1300, USA
MOTOROLA and the Stylized M Logo and Symbol and the Symbol logo are registered in the U.S. Patent and Trademark Office. All other product or service names are the property of their respective owners.
© Motorola, Inc. 2009
72-125044-01 Rev A - December 2009

<http://www.motorola.com/mc3000>

MC3090Z

Recommended Usage Guide