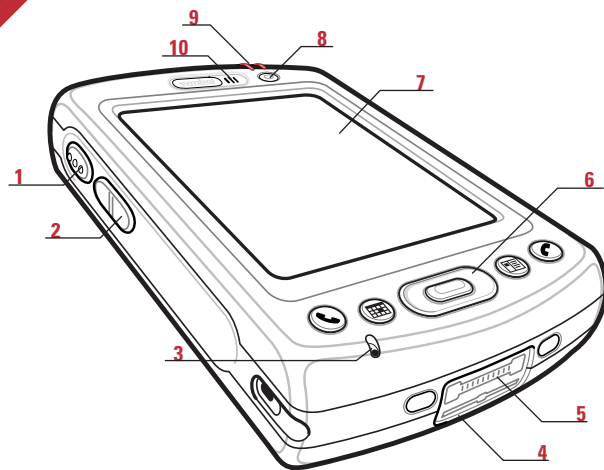


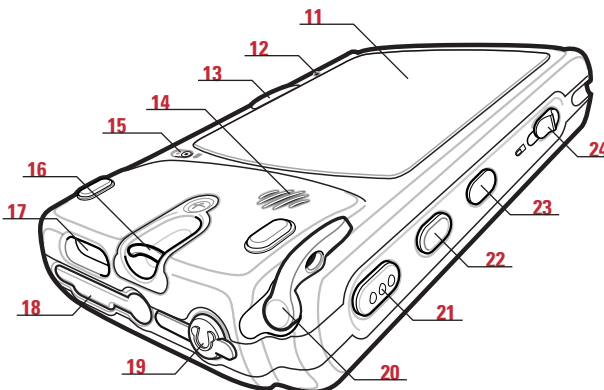
Features

Note: MC50-SP shown



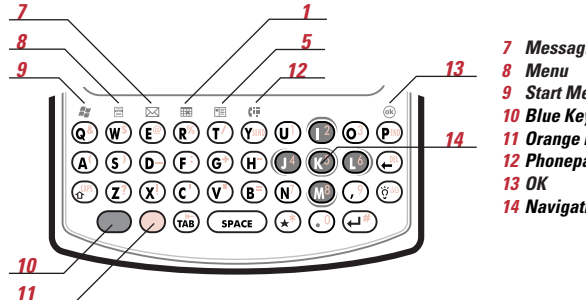
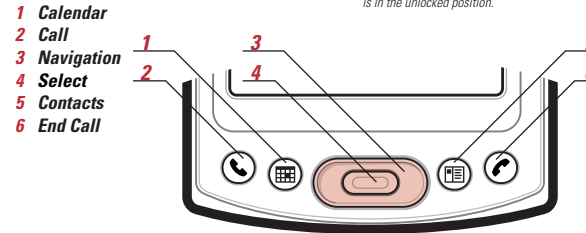
- | | | |
|----------------------|---------------------|------------------|
| 1 Scan/Action Button | 4 Handstrap Clip | 8 Power Button |
| 2 Up/Down Button | 5 Connector | 9 LED Indicators |
| 3 Microphone | 6 Keypad/Navigation | 10 Phone Speaker |
| 7 Touch Screen | | |

- | | | |
|------------------------|--|--|
| 11 Battery | 17 Scan Window
(See Data Capture Options) | 21 Scan/Action Button |
| 12 Reset Button | 18 Secure Digital [SD] Slot | 22 Action Button |
| 13 Battery Release | 19 Headset Jack | 23 IrDA Port |
| 14 Speaker | 20 Stylus | 24 Keypad Lock
Up - Locked
Down - Unlocked |
| 15 Battery Lock Switch | | |
| 16 Tether Point | | |



Keypads

Note: Keypads will not function unless Keypad Lock is in the unlocked position.



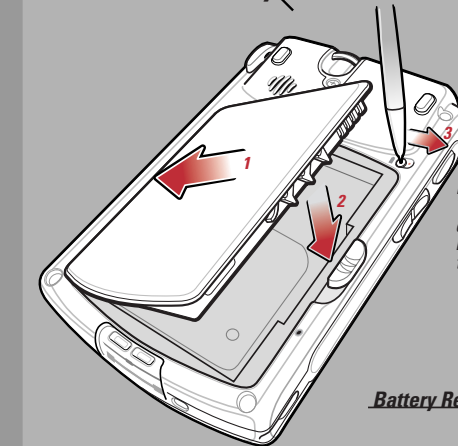
Blue Key
Use this key to launch applications, control cursor movement and select items.
> Press the key once to activate this mode followed by another key.
> Press the key twice to lock this mode. Press the key a third time to unlock.
> Press and hold the key while selecting a sequence of keys.

Orange Key
Use this key to access the secondary layer of characters and actions.
> Press the key once to activate this mode followed by another key.
> Press the key twice to lock this mode. Press the key a third time to unlock.
> Press and hold the key while entering characters or actions.

Getting Started

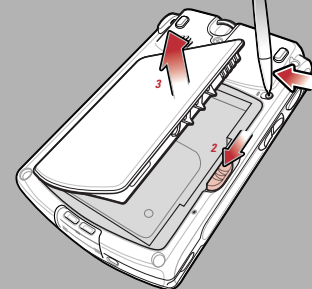
= LED Indicator Location
Amber = Charging | Green = Fully Charged

1 Insert the Battery



Note:
The MC50 will not turn on unless the Battery Lock Switch is moved to the right.

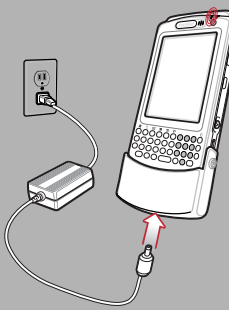
Battery Removal



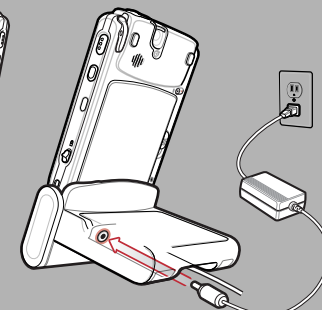
2 Charge the MC50

24hr*

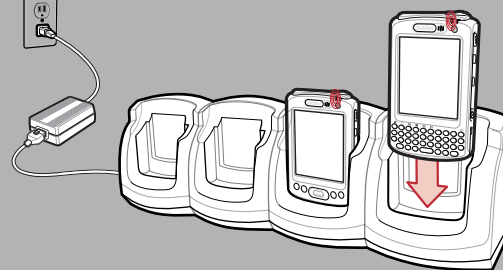
AC Adapter Cable



1-Slot Cradle



4-Slot Cradle

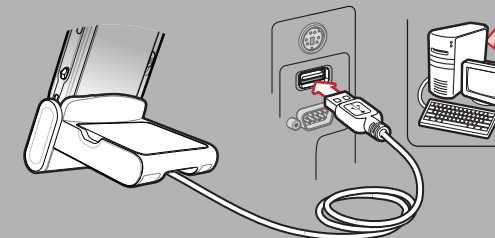


* It is recommended that this product be charged for 24 hours before the first use to ensure that the internal battery is fully charged.

3 Install ActiveSync[®]

Download the latest version of ActiveSync from <http://www.microsoft.com> and follow the instructions to install ActiveSync onto the host computer.

4 Communicate with Host



5 Create a Partnership

Follow the on-screen ActiveSync instructions to establish a connection between the MC50 and the host computer.

Support Information

More Information on the MC 50

Visit the Symbol Web site at <http://www.symbol.com/mc50>

Setting up and using the MC50

MC 50 User's Guide

MC 50 Integrator's Guide

Available at: <http://www.symbol.com/mc50>

Troubleshooting

MC50 – MC50 User's Guide

Accessories – MC50 Integrator's Guide

Available at: <http://www.symbol.com/mc50>

Connecting and synchronizing with the host computer

ActiveSync® Help on the host computer. To view Help, start ActiveSync®, click Help – Microsoft ActiveSync® Help.

Information on using programs on the MC50

Tap Start – Help within the specific program.

Service and Warranty

Licensing, Patent and Regulatory Guide

This guide covers the following configurations:
MC5040-PQ0DBN1WW, MC5040-PQ0DBQ1WW
MC5040-PK0DBN1WW, MC5040-PK0DBQ1WW
MC5040-PS0DBN1WW, MC5040-PS0DBQ1WW

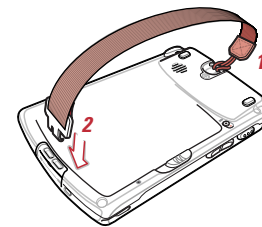


72-67793-01 Rev. B January 2005

MC50 Quick Start Guide

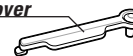
www.symbol.com/mc50

Hand Strap

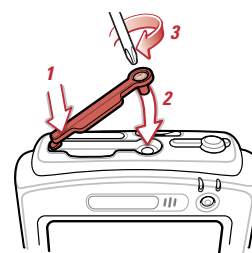


Secure Digital [SD] Card Cover

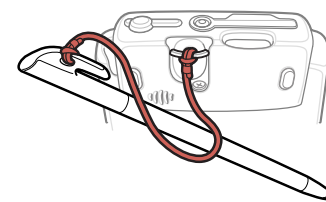
SD Card Cover



Extended SD Card Covers



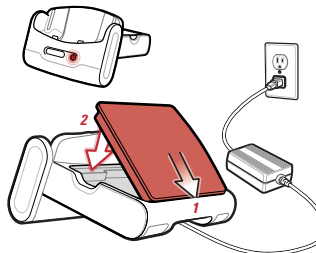
Tethered Stylus



Spare Battery Charging

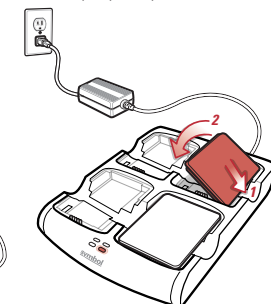
Charge in Cradle

Solid Amber: Battery charging
Solid Green: Battery fully charged
Standard Capacity Battery: ~ 3.5 hours
Extended Capacity Battery: ~ 7 hours



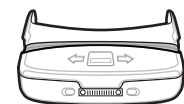
Spare Battery Charger

Flashing Amber: Battery charging
Solid Amber: Battery fully charged
Standard Capacity Battery: ~ 2.5 hours
Extended Capacity Battery: ~ 6 hours

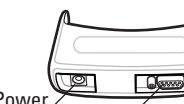


Optional Snap-On Accessories

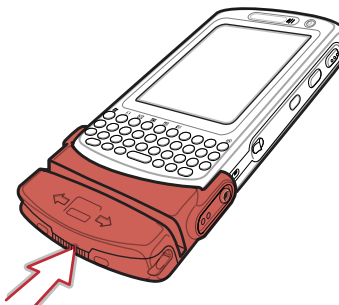
Magnetic Stripe Reader



Cable Adapter Module



Note: MSRS000 shown

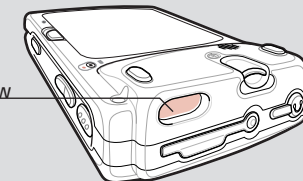


Data Capture Options

Scanner

MC50-SP
MC50-SQ

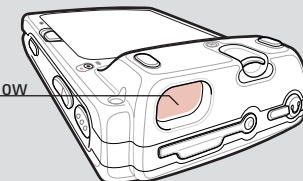
Scan Window



Imager

MC50-IP
MC50-IQ

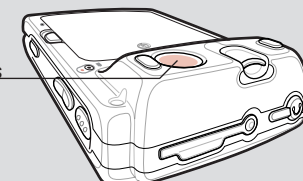
Imager Window



Camera

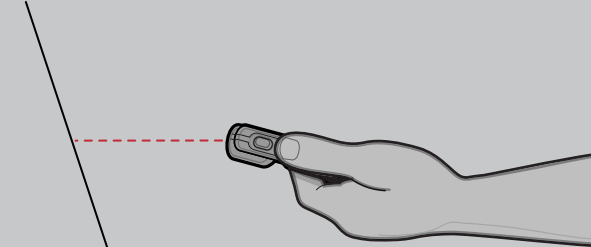
MC50-CP
MC50-CQ

Camera Lens

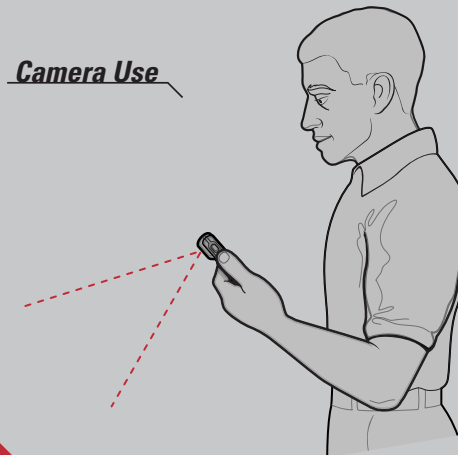


Optimum Use Positions

Scanning/Imaging



Camera Use



Optimum Scanning and Imaging

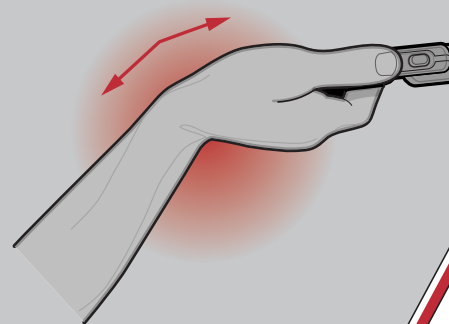
Scanning



Imaging



Avoid Extreme Wrist Angles



AVOID EXTREME WRIST ANGLES

