

# SYMBOL DS6708

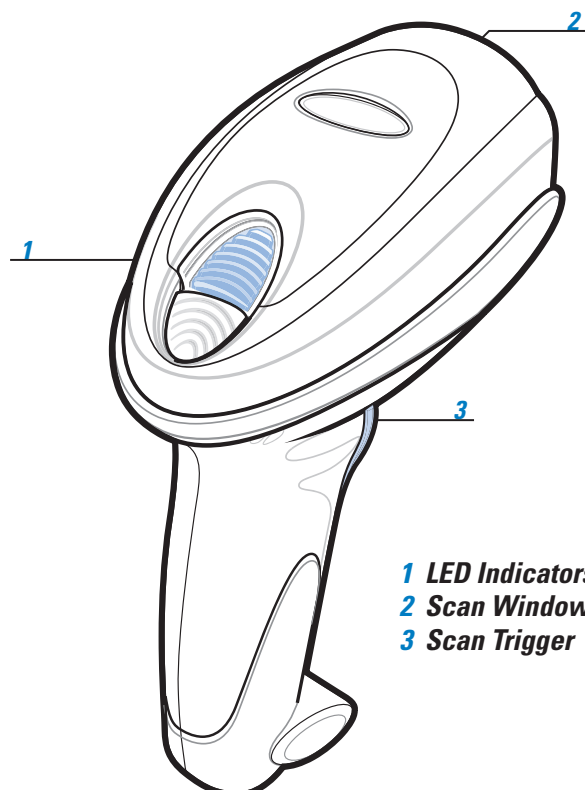
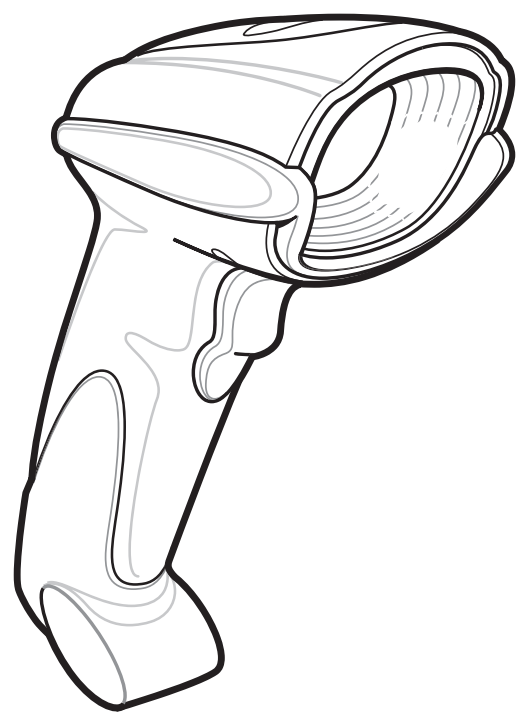
## Quick Start Guide



<http://www.motorola.com/ds6708>

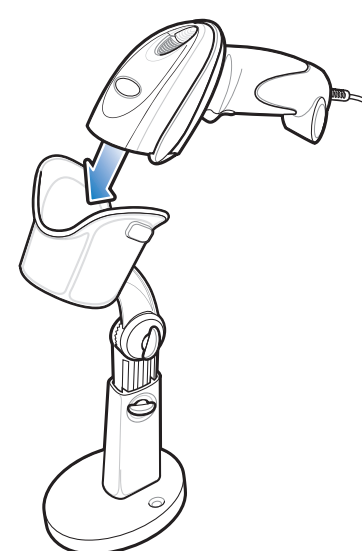
See Product Reference Guide for detailed information

## ACCESSORIES

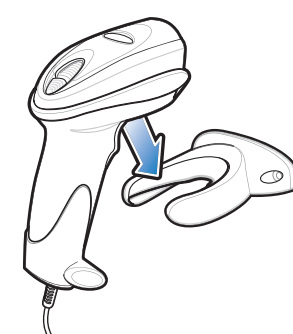


- 1 LED Indicators
- 2 Scan Window
- 3 Scan Trigger

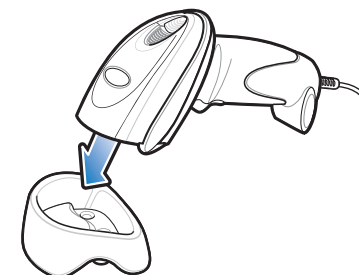
### IntelliStand



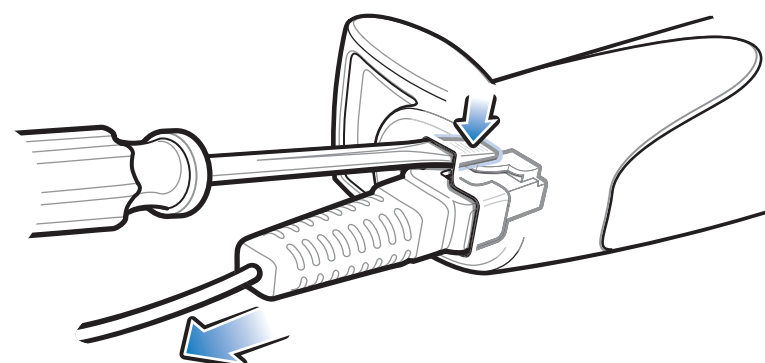
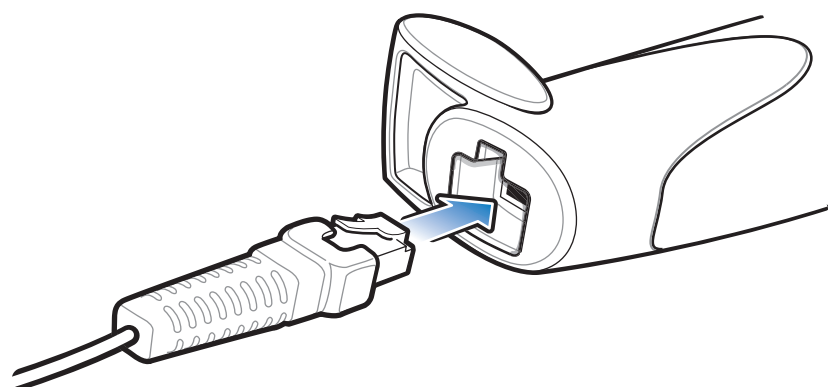
### Wall Mount



### Desk Cup



## CORD ATTACHMENT/REMOVAL



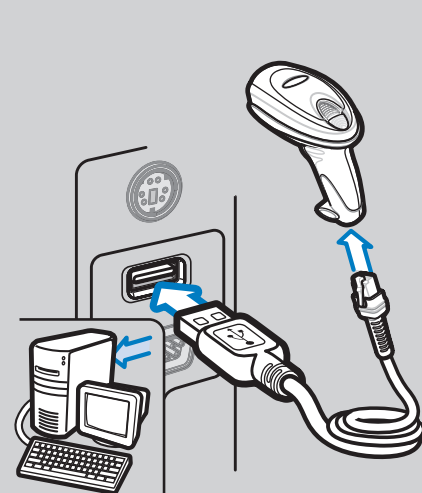
## HOST INTERFACES

NOTE: Cables may vary depending on configuration

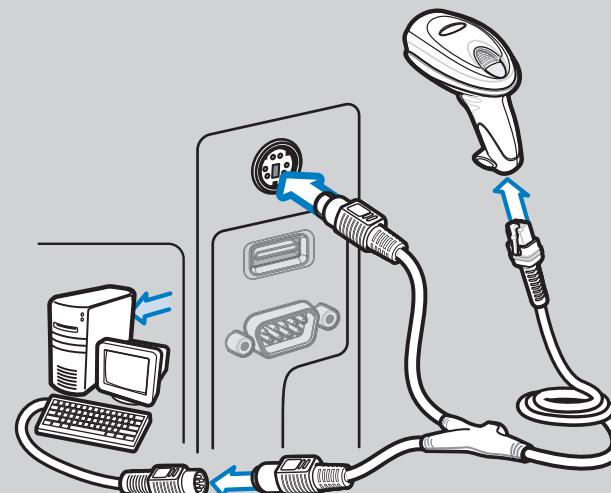
### RS-232



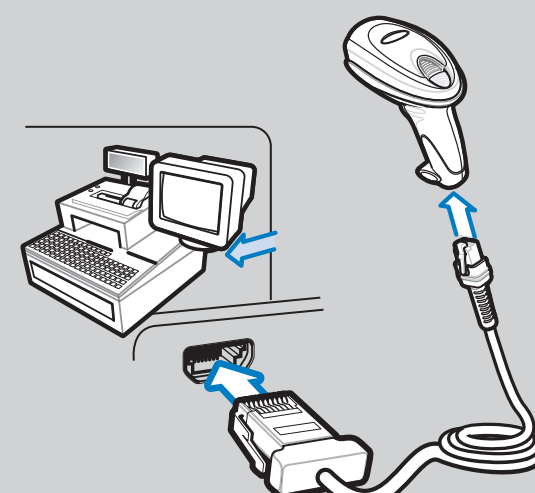
### USB



### Keyboard Wedge



### IBM 46XX



## TROUBLESHOOTING

### Scanner not working

#### No power to scanner

Check system power; ensure power supply, if required, is connected

#### Incorrect interface cable used

Ensure that correct interface cable is used

#### Interface/power cables are loose

Ensure all cable connections are secure

### Scanner not decoding bar code

#### Scanner not programmed for bar code type

Ensure scanner is programmed to read type of bar code being scanned

#### Bar code unreadable

Ensure bar code is not defaced; try scanning test bar code of same bar code type

#### Distance between scanner and bar code incorrect

Move scanner closer to or further from bar code

### Scanner decoding bar code, but data not transmitting to host

#### Scanner not programmed for correct host interface

Scan appropriate host parameter bar codes

#### Interface cable is loose

Ensure all cable connections are secure

### Scanned data incorrectly displayed on host

#### Scanner not programmed for correct host interface

Scan appropriate host parameter bar codes

## SYMBOL DS6708 PROGRAMMING BAR CODES

### Set Defaults



SET DEFAULTS

### Enter Key (Carriage Return/Line Feed)



<DATA><SUFFIX 1>

### IBM 46XX Host Types



PORT 5B

### USB Host Types



HID KEYBOARD EMULATION

### Level



LEVEL



PORT 9B



IBM HAND-HELD USB

### RS-232 Host Types



STANDARD RS-232



NIXDORF RS-232 MODE B

### Keyboard Wedge Host Types



IBM PC/AT and IBM PC COMPATIBLE



ICL RS-232



FUJITSU RS-232



NIXDORF RS-232 MODE A



OPOS/JPOS



